

# Vision Tools SonoPro

Connection Layout

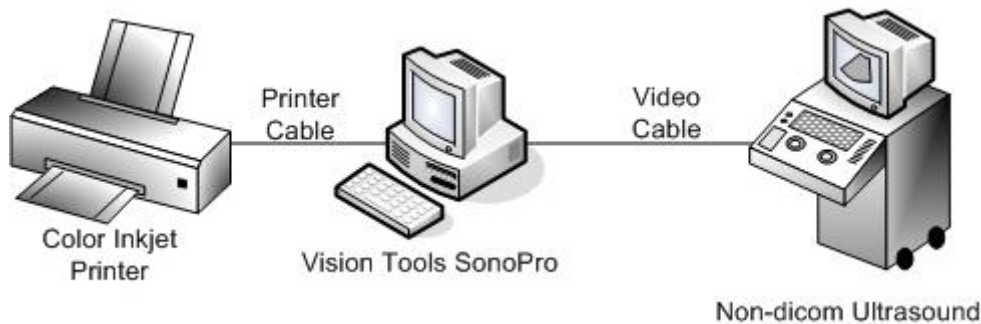


## One Machine Connection

Vision Tools workstation can work as both acquisition and viewing station in the same hardware or can be separated to provide acquisition is one station and viewing in another station this suites better the network environment.

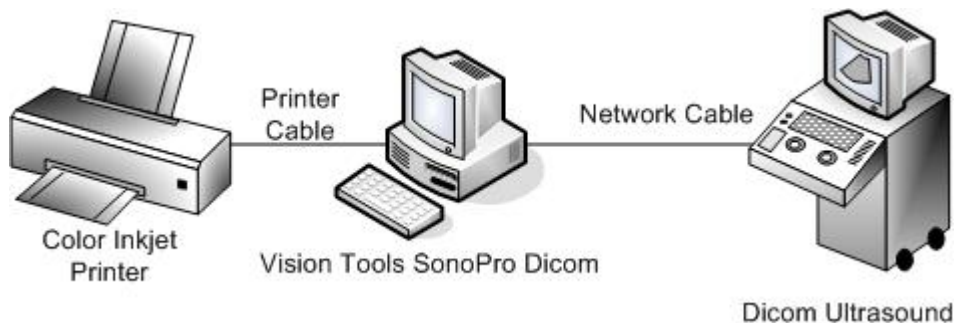
## Video Connection [non-Dicom]

Vision Tools SonoPro workstation is connected to the non-dicom colored ultrasound machine using BNC or S-VHS video cable. The workstation supports only standard video signals [PAL or NTSC].



## Dicom Connection

Vision Tools SonoPro workstation is connected to the dicom ultrasound machine using standard network cable. The workstation can support any type of network connections, the workstation is provided with a dicom store server [SCP] to accept dicom ultrasound images from the ultrasound machines.



# Vision Tools SonoPro

## Connection Layout



### Network Connection

Multiple Vision Tools SonoPro workstations can be connected to a network to provide mini pacs system for both B/W or color ultrasound machines in order to store images, cine loops and reports to one file server and be accessed from any SonoPro workstation on the network.

The SonoPro network can be either standard network environment [non-dicom] or can be dicom network. Vision Tools SonoPro can be connected to one machine as a dedicated acquisition station or can be connected to two ultrasound machines to perform acquisition from both machines at the same time. For Viewing and processing, Vision Tools SonoPro Review station is connected to the network to view and process images, reports from any where in the network.

