

Vision Tools Sono

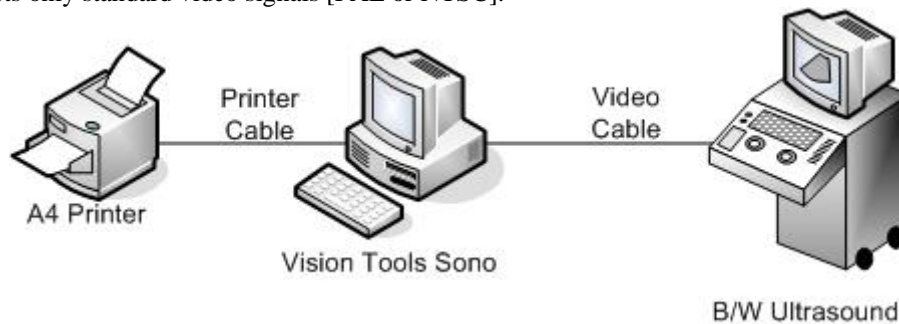
Connection Layout



One Machine Connection

Vision Tools workstation can work as both acquisition and viewing station in the same hardware or can be separated to provide acquisition is one station and viewing in another station this suites better the network environment.

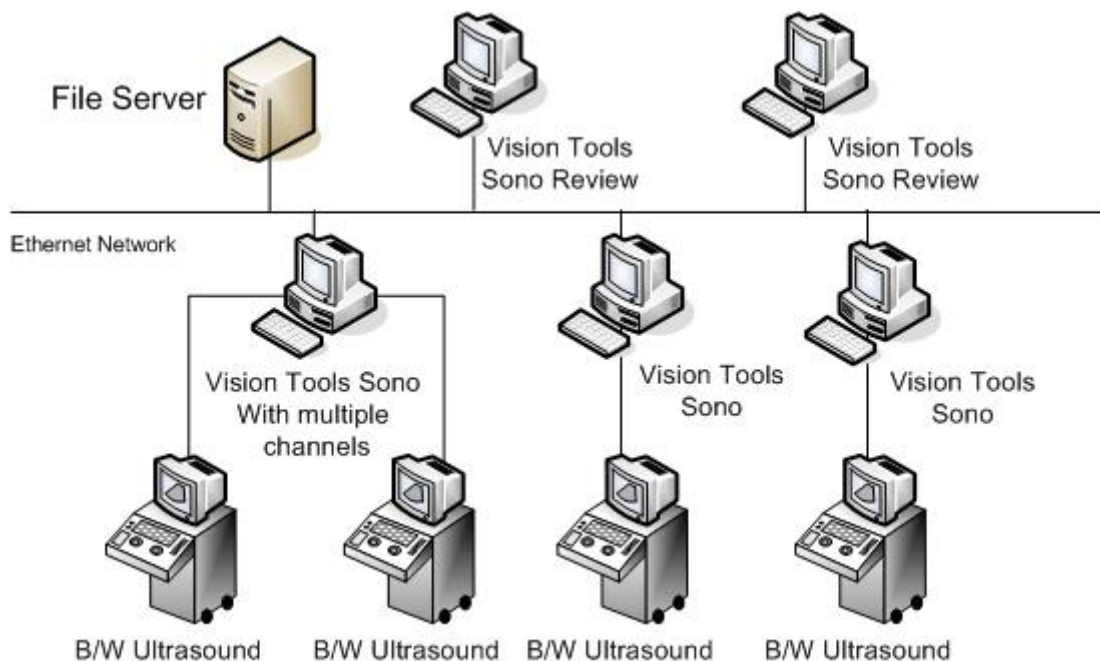
Vision Tools Sono workstation is connected to the B/W ultrasound machine using RCA or BNC video cable. The workstation supports only standard video signals [PAL or NTSC].



Network Connection

Multiple Vision Tools Sono workstations can be connected to a network to provide mini pacs system for B/W ultrasound machines in order to store images, cine loops and reports to one file server and be accessed from any Sono workstation on the network.

The Sono network is a standard network environment [not dicom]. Vision Tools Sono can be connected to one machine as a dedicated acquisition station or can be connected to two ultrasound machines to perform acquisition from both machines at the same time. For Viewing and processing, Vision Tools Sono Review station is connected to the network to view and process images, reports from any where in the network.



Main Office: 9 Abd El Hamid Lotfy St, Makram Obied ,Nasr City, Cairo, Egypt
Tel/ Fax : +20 (0) 2 29287061 & +20 (0) 2 22713860

MILLENSYS – S.A.E
E-mail: sales@millensys.com
WEB: <http://www.millensys.com>